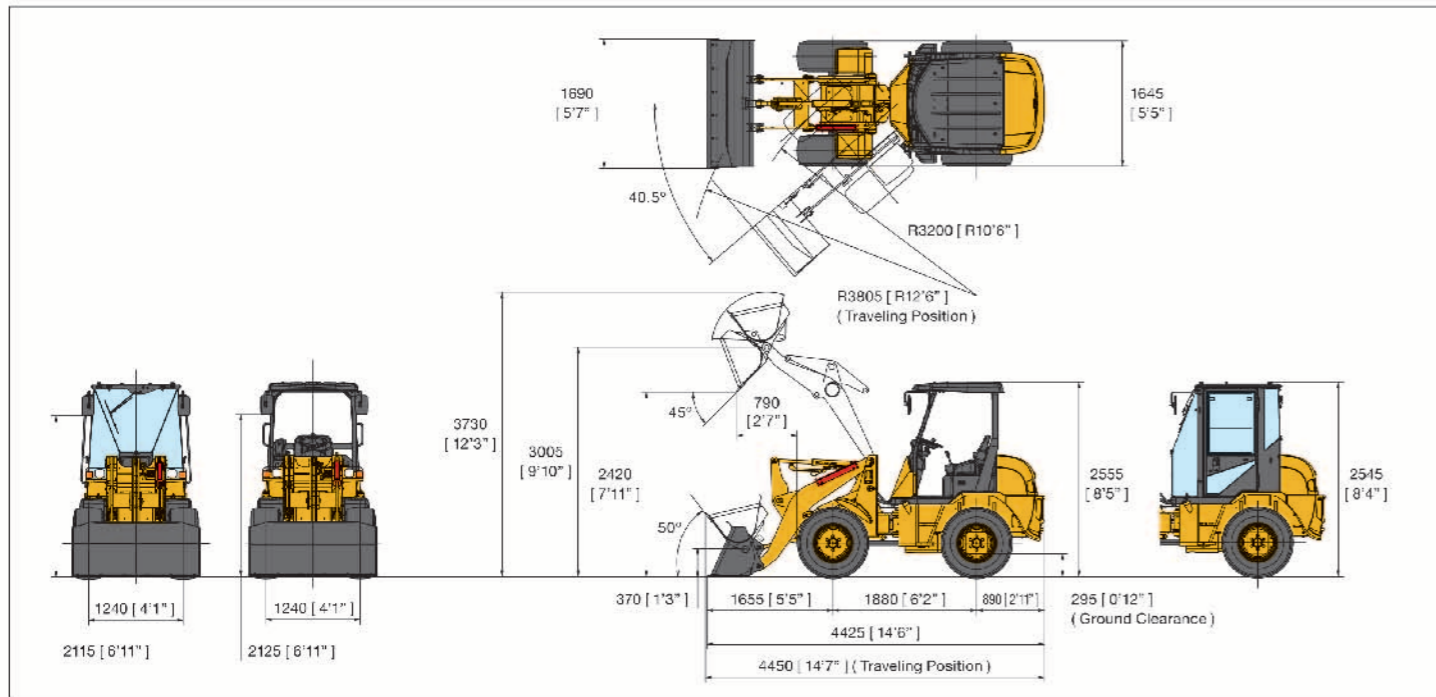


Dimension

Unit : mm | ft-in |



**YANMAR**

WHEEL LOADER

**V4-7**  
[Gross] 30.5kW

Specifications

MODEL		V4-7	
TYPE		CANOPY	CABIN
ENGINE	Type	Water-cooled 4-cyl. diesel engine	
	Model	4TNV88C-NKAH	
	Output (Gross)	kW (HP) / min <sup>-1</sup>	30.5 (40.9) / 2500
	Output (NET)	kW (HP) / min <sup>-1</sup>	29.1 (39.0) / 2500
	Displacement	cm <sup>3</sup> (cu. in.)	2189 (133.6)
PERFORMANCE	Bucket capacity, std.	m <sup>3</sup> (yd <sup>3</sup> )	0.5 (0.65)
	Operating load	kN (lb)	11.3 (2535)
	Lifting capacity at Low end / at MAX reach	kN (lb)	33.1 (7441) / 23.8 (5350)
	Tipping load Straight / Full turn	kN (lb)	27.0 (6070) / 22.5 (5058)
	Breakout force	kN (lb)	24.5 (5508)
	Dumping clearance	mm (ft. in.)	2420 (7'11")
	Traveling speed	km / h (mph)	19.0 (11.8)
	Oscillation angle	degree	±8
	Min. turning radius	mm (ft. in.)	3805 (12'6")
	Min. ground clearance	mm (ft. in.)	295 (12")
ELECTRONIC	Battery capacity ( 5 hours rate capacity )	Ah	72
	Generator capacity	V / A	12 / 80
PTO	Front Hyd. PTO Maximum flow	L (US gal) / min <sup>-1</sup>	56 (14.8)
	Set pressure	kPa (PSI)	20590 (3000)
STEERING	Type	Center-pivot frame articulation with full hyd. power	
	Articulate angle	degree	40.5
TRANSMISSION	Type	Automatic hydrostatic	
DRIVES	Type	4-wheel drive	
WHEELS	Type	15.5/60-18-8PR	
BRAKES	Type	Fully enclosed, mechanical, wet, multiple disc	
OPERATING WEIGHT		kg (lb)	3640 (8025) 3865 (8521)
TRANSPORT DIMENSIONS	LxWxH	mm (ft. in.)	4425x1690x2555 (14'6"x5'7"x8'5") 4425x1690x2545 (14'6"x5'7"x8'4")
FILLING CAPACITY	Fuel tank capacity	L (US gal)	55 (14.5)
	Engine oil	L (US gal)	7.4 (1.95)
	Hydraulic oil tank	L (US gal)	52 (13.7)
	Coolant	L (US gal)	4.7 (1.2)
	Front axle / Rear axle	L (US gal)	7.5 (2.0) / 9.5 (2.5)

Please note that the standard equipment may vary from this list. Consult your Yanmar dealer for confirmation



**YANMAR CONSTRUCTION EQUIPMENT CO.,LTD.**

All data subject to change without notice.

OVERSEAS SALES DEPT.

MARKETING & SALES DEPT.

1717-1 Kumano, Chikugo, Fukuoka 833-0055, JAPAN

TEL +81-942-53-5465 FAX +81-942-53-5132

yanmar.com



# Powerful & Efficient

To be productive, you need a lot of power.  
With Yanmar you have the power to ascend slopes smoothly.  
The engine delivers high output,  
all the while meeting stringent environmental regulations.  
The innovatory engine design provides the additional power  
for when you need it, paving the way towards your business's success.

# POWER & PERFORMANCE



## ■ Long Wheel Base & Wide Tread

Exceptional balance and wide treads deliver impressive stability when you are on the job or on the move, making it as easy as driving a car.

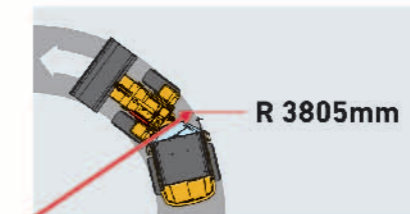
Wheel Base **1880mm**  
Tread Width **1240mm**



## ■ Rear Axle Oscillation

Delivers a strong performance on uneven ground, mitigating driver fatigue.

Oscillation Angle **±8°**



## ■ Tight-turning Radius

Articulated steering, allows maneuvering in narrow spaces.

Min. Turning Radius **3805mm**

## ■ Horsepower Adjustability

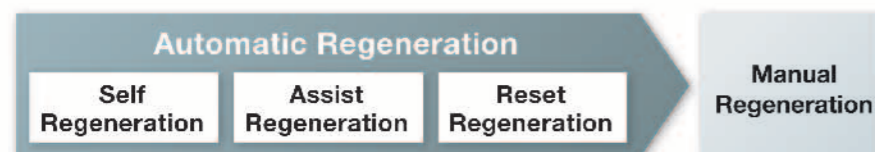
Torque is synchronized to seamlessly with the amount of load.

Whether it be an uphill or in the mud, you can rest assured that the engine won't stall while you are on the job.

## Equipped with an EPA Tier 4 compliant environmentally conscious Yanmar diesel engine.

### ■ DPF\*-equipped TNV Common Rail Engine **[NEW]**

Plenty of power and excellent fuel economy. The DPF-equipped common rail engine delivers a sharp reduction in NOx (nitrogen oxides). Highly efficient combustion capabilities and Yanmar's innovatory 3-step self-regeneration process drastically diminish particulate matter occurrence, substantially decreasing manual DPF regeneration.\*\*



There is absolutely no need to worry about regeneration during the automatic regeneration phase—you can just keep on working.



CLEAN DIESEL ENGINE

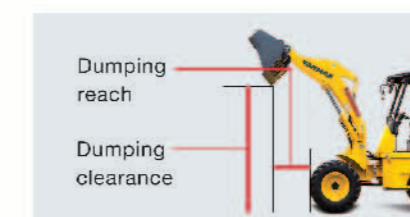
**4TNV88C-NKAH 30.5kW**  
(GROSS)

Compliant with EPA Tier 4 standards



## ■ Auto Leveler

Place the bucket evenly on the ground with just one lever. Boost productivity by transitioning seamlessly from dumping to scooping.



## ■ Dumping Clearance & Reach

The capacity-enhancing design allows you to maximize productivity when truck loading.

Dumping Clearance **2420mm**  
Dumping Reach **790mm**



## ■ Noise Level Reduction

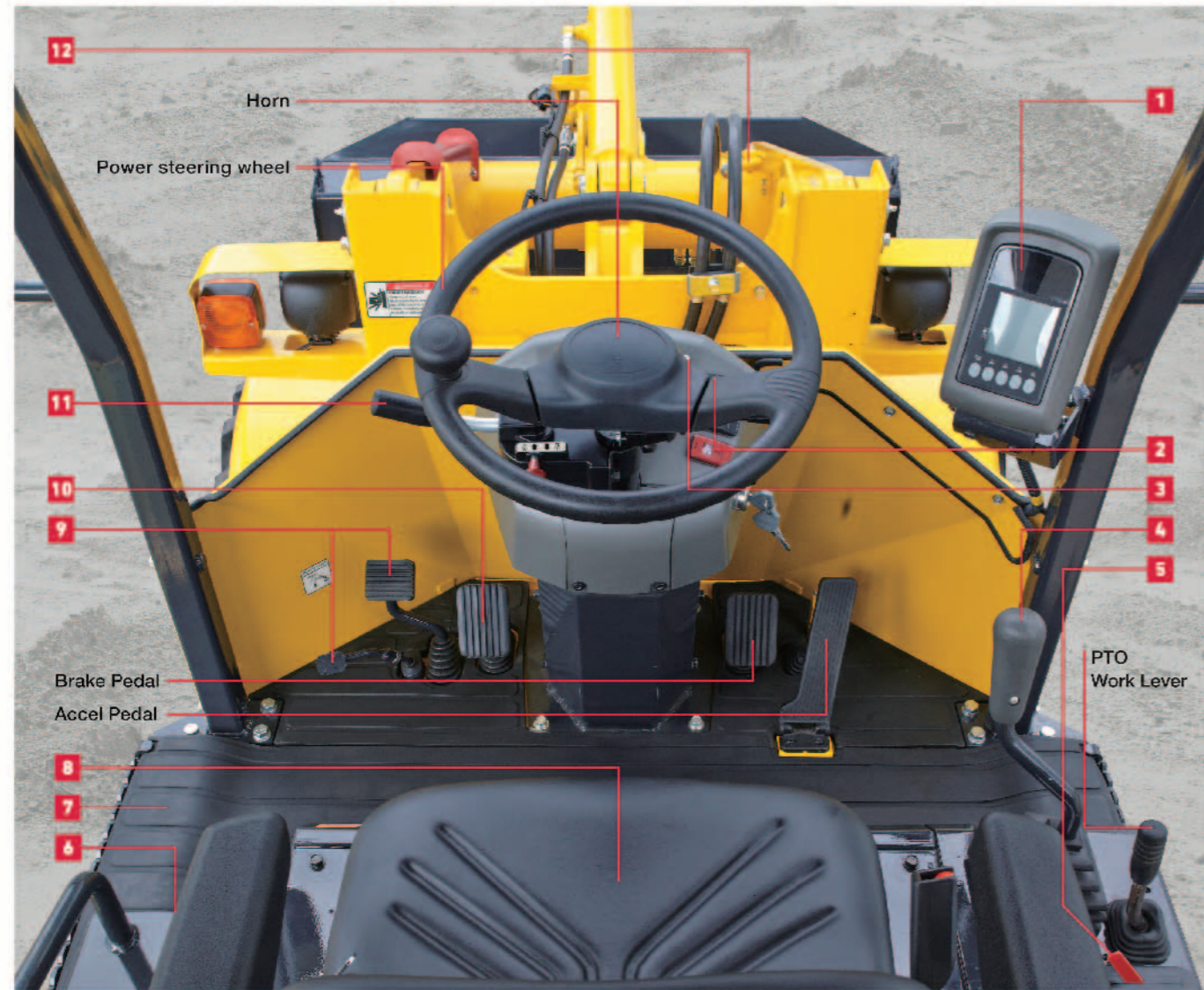
In addition to the faint engine sound, intake, exhaust, and hydraulic components have been analyzed and improved to deliver an extremely quiet operator experience.

Noise Level **5% improved**  
(Compared to the previous model)

\* 1 : Diesel Particulate Filter. For trapping particulate matter (a complex mixture of extremely small particles).  
\* 2 : Depending on the worksite or usage circumstances, a manual regeneration may be required at times.

\* The photo displays optional features. \* Products on sale may have a different configuration.

# PLEASANT OPERATION

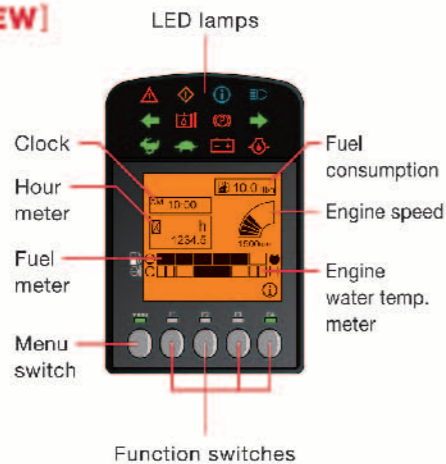


## Operator Station

All the operating switches and controlled buttons are located ergonomically to ensure operator comfort. Additionally, you can stay rest assured as front attachments are easily visible from the driver's seat.

### 1 LCD Monitor [NEW]

A host of essential information and data on operating conditions is displayed on an intuitive user interface. The backlight makes night time viewing effortless, and in the event that something irregular occurs, a light will notify you of it.



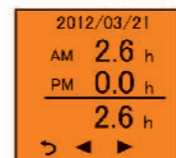
### LED lamps examples

- Warning lamp
- Caution lamp
- Information lamp
- High beam lamp
- Direction indicator lamp
- Hydraulic oil temp. lamp
- Parking lamp
- High speed travel lamp
- Low speed travel lamp
- Battery charge lamp
- Engine oil pressure lamp

### Display examples



Indicates up to the past 90 days.



### 2 Dual Speed

Travel speed can be adjusted between two settings allowing you to alter the speed to suit a wide range of applications.

#### ☉ Fully Automatic Mode

Just press the accelerator. The machine will accelerate smoothly and change travel speed automatically.

#### ☉ Low Speed Mode

Maximum travel speed can be fixed in low speed mode irrespective a convenient feature for jobs in restricted area.



### 7 Wide Entrance [NEW]

The wide entrance offers plenty of room to get in and out of the cab safely.

Flooring Width at Entrance **300mm > 500mm**

**70% UP**

(Compared to the previous model.)



### 3 Parking Brake Disengagement Lamp & Alarm

In case you forget to put the parking brake on, an alarm and lamp will notify you.



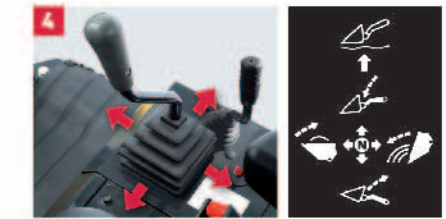
### 5 Lock lever

The control lever can be locked, eliminating unintentional usage.



### 8 Suspension Seat

The suspension seat absorbs shock making the operator experience smoother, comfortable and pleasant. Optionally, it can be tilted back into a reclining position.



### 4 Joystick for Bucket work

Raising and lowering the bucket, tilting, dumping and floating are all accomplished through the use of just one joystick.



### 6 External Power Socket

With access to 12V power, devices such as cell phones can be easily recharged.



### 9 Parking Brake and Release Pedal [NEW]

Simply press down on the pedal to apply the parking brake.



### 10 Inching Pedal

A pedal connects disconnect engine transmission.



### 11 F2xR2 lever

A single lever allows effortless shifting between forward and reverse. The safety lock incorporated into its design acts as a prevention against unintentional usage.



### 12 PTO

PTO pipes at the front provide easy access for connecting a range of attachments.

# EASY MAINTENANCE & SAFETY



## ■ Engine Hood

The wide-open rear hood enable maintenance easily and quickly.

The Hood Opening **15% UP**  
( Compared to the previous model )



## ■ ROPS/FOPS - conforming canopy

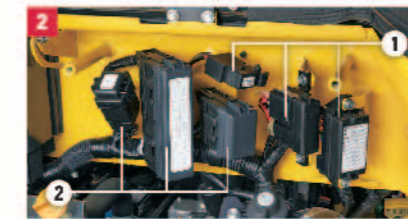
**ROPS** / Roll over protective structure ( ISO3471-2008 )

**FOPS** / Falling object protective structure ( ISO3449-2005 )



## ■ Filters are arranged to maximize convenience.

- ① Engine Oil Filter    ③ Pre Filter
- ② Fuel Filter



## ■ User-Oriented Electrical System

- ① Electric Fusebox
- ② Relays



## ■ Battery Cut Switch **[NEW]**

Preventing electrical discharge during long-term storage can be done simply with this switch.



## ■ Reverse Lights and Reversing Alarm

Both a reverse light and an alarm are activated when reversing to ensure maximum safety.



## ■ Towing Hitch Pin

The hitch pin allows for the convenient towing of attachments, providing greater work stability.



## ■ Maintenance Compartment **[NEW]**

The maintenance compartment offers ultra-convenient access to each part for highly efficient inspections and maintenance.



## ■ Counter Weight

A large cast iron weight helps protect the rear of the machine against damage arising from impact.



## ■ Engine Stop Switch **[NEW]**

In an emergency, the engine can be switched off directly, without the need to be in the operators seat.



## ■ Beneath the Floor Maintenance

The floor plate can easily be removed for quick access to the engine and power train.



## ■ Steps & Grips **[NEW]**

The ideal placement of steps make entry and exit of the cab easier.



## ■ Hydraulic Cylinder Lock

The boom can be locked when raised, allowing for safe inspections and maintenance.



## ■ Indicator Light and Sidelight Combination

Both indicator lights and side lights are installed for additional safety.

# COMFORTABLE CABIN



## ■ ROPS/ FOPS Compliant Cabin

The ROPS / FOPS compliant cab offers excellent visibility and provides plenty of sunlight. The lower section of the door is also glass, enhancing downward visibility.

**ROPS** / Roll over protective structure (ISO3471-2008)

**FOPS** / Falling object protective structure (ISO3449-2005)



## ■ Wide Entrance

The doors wide entrance makes entering and exiting the machine an easy task.

Entrance Width **660mm**  
**45mm improved**  
(Compared to the previous model)



## ■ Sliding Window [NEW]

The left door is constructed with superior glass specifications that provide ample sunlight. The sliding window can be optimally adjusted to four levels, delivering more-than-sufficient ventilation.



## ■ Windshield Wipers

The non-parallel windshield wipers effectively cover a wider area of the windshield.



## ■ Delivery System

A delivery system for front and rear windshield washer fluid is built standard, enabling both windows to be washed.



## ■ Defroster [NEW]

The heater unit is ideally positioned to increase its effectiveness. Frost is removed in an instant, ensuring excellent visibility even in regions with snowfall.

Thawing speed **40% UP**  
(Compared to the previous model)



## ■ Rear-View Mirror

Allowing you to see what's behind you, the rear-view mirror provides an additional level of safety.

# OPTION



## ■ Air Conditioner

The air conditioner lets the operator adjust the temperature to the season, providing maximum comfort all year round.



## ■ SMARTASSIST-Remote

SMARTASSIST-Remote is a telematic system that provides sophisticated management for construction equipment equipped with a GPS transmission terminal. The benefits are substantial, from safeguarding your equipment to optimal maintenance and a much quicker comprehension of the reasons behind machine troubles, delivering uninterrupted productivity-enhancing support and services.



## ■ Maximum Speed Limit Lever (Inching Lever)

Travel speed can be limited for securing the necessary flow when using attachments required large flow.



## ■ Radiator Screen

The radiator screen helps prevent radiator clogging.